

# TS ReportServer™ Reference Manual



*Version 8.7.1*

285 Davidson Ave., Suite 302 • Somerset, NJ 08873-4153  
Telephone: 732-560-1377 • Outside NJ 800-524-0430  
Fax: 732-560-1594

Internet address: <http://www.tbred.com>

Published by:  
Thoroughbred Software International, Inc.  
285 Davidson Ave., Suite 302  
Somerset, New Jersey 08873-4153

Copyright © 2011 by Thoroughbred Software International, Inc.

All rights reserved. No part of the contents of this document may be reproduced or transmitted in any form or by any means without the written permission of the publisher.

Document Number: RS8.7.1M01

The Thoroughbred logo, Swash logo, and Solution-IV Accounting logo, OPENWORKSHOP, THOROUGHbred, VIP FOR DICTIONARY-IV, VIP, VIPImage, DICTIONARY-IV, and SOLUTION-IV are registered trademarks of Thoroughbred Software International, Inc.

Thoroughbred Basic, TS Environment, T-WEB, Script-IV, Report-IV, Query-IV, Source-IV, TS Network DataServer, TS ODBC DataServer, TS ODBC R/W DataServer, TS ORACLE DataServer, TS DataServer, TS XML DataServer, GWW, Gateway for Windows™, TS ChartServer, TS ReportServer, TS WebServer, TbredComm, WorkStation Manager, Solution-IV Reprographics, Solution-IV ezRepro, TS/Xpress, and DataSafeGuard are trademarks of Thoroughbred Software International, Inc.

Other names, products and services mentioned are the trademarks or registered trademarks of their respective vendors or organizations.

## **TS REPORTSERVER**

TS ReportServer takes output from Report-IV on the host and presents it graphically at the workstation. It is fully integrated with VIP but does not require that the graphical presentation be installed or enabled, meaning it will also work when running your application in character mode. You can also use TS ReportServer with Gateway for Windows.

## PATH DEFINITIONS AND CONVENTIONS

The paths noted in this manual vary depending upon the operating system.

*vip-data-path* is used to indicate the path where files requiring read and write access are located.

- On Windows Vista/Windows Server 2008/Windows 7 the required path is C:\ProgramData\Thoroughbred Software\TSI.
- On Windows Server 2000/Windows XP/Windows Server 2003 the default path is C:\Program Files\TSI.

*vip-user-path* is used to indicate the path where user specific files requiring read and write access are located.

- On Windows Vista/Windows Server 2008/Windows 7 the required path is C:\Users\tbred2\AppData\Roaming\Thoroughbred Software.
- On Windows Server 2000/Windows XP/Windows Server 2003 this is the same as the *vip-data-path*.

*vip-program-path* is used to indicate the path where executable and some dll files are located.

- On all Window platforms the default path is C:\Program Files\TSI\Bin.

*vip-system-path* is used to indicate the path where Thoroughbred ini files and other system files that require write access are located.

- On Windows Vista/Windows Server 2008/Windows 7 the required path is C:\ProgramData\Thoroughbred Software.
- On other Window platforms this path may vary, typically it is C:\Documents and Settings\All Users\Application Data\Thoroughbred Software.

## SETUP

The Thoroughbred Environment includes the **RPSE**R printer table. From the **System Administration** menu select **Printer Assignment**. For more information see the Dictionary-IV Administrator Guide. Assign any printer device (i.e. **RS**, **LP**, **P1**) to the **RPSE**R printer table. The recommended printer device is **RS**. You will then need to modify your **IPLINPUT** file to include this printer device.

For more information see the Thoroughbred Basic Customization and Tuning Guide.

### IPLINPUT for Windows Basic:

```
DEV RS,4,,,,,NUL
or
DEV RS,4,,,,,file-name
```

Where *file-name* is the name of any text file defined in your Thoroughbred Basic Environment for example, *basic-install-path*\Tbsc\RS*Text.txt*

### IPLINPUT for UNIX:

```
DEV RS,4,,,1,,,/dev/null
```

For more help on how to use the TS ReportServer

- Select *vip-data-path*\Tsi\Bin\Rps.hlp, or
- Select Help and then select Help Index from the TS ReportServer menu bar.

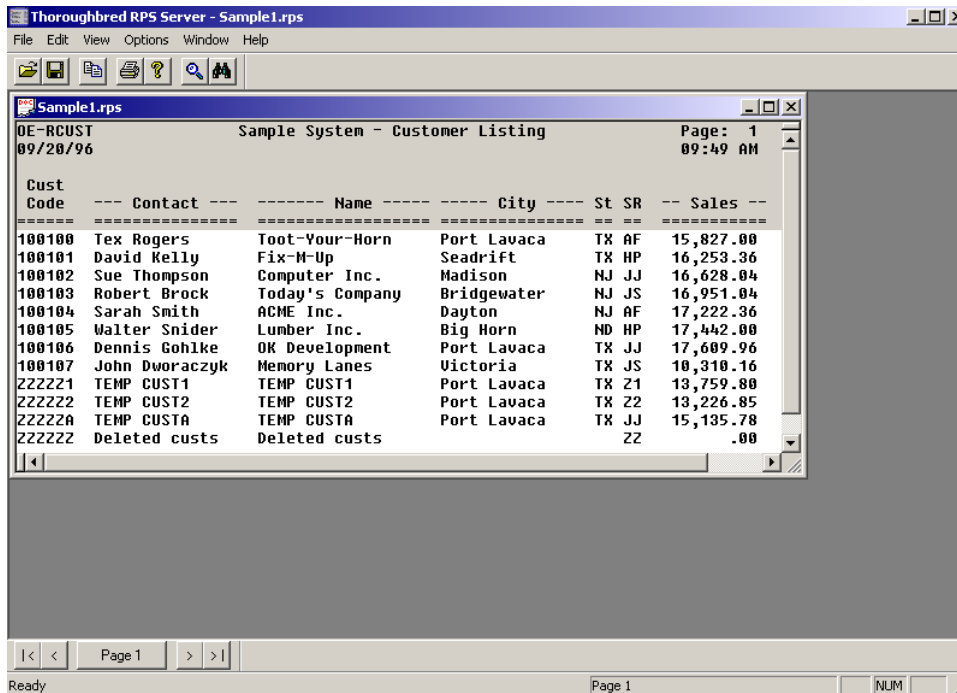
For more information see the Thoroughbred Basic Customization and Tuning Guide.

## Creating and Sending Report-IV Output to TS ReportServer

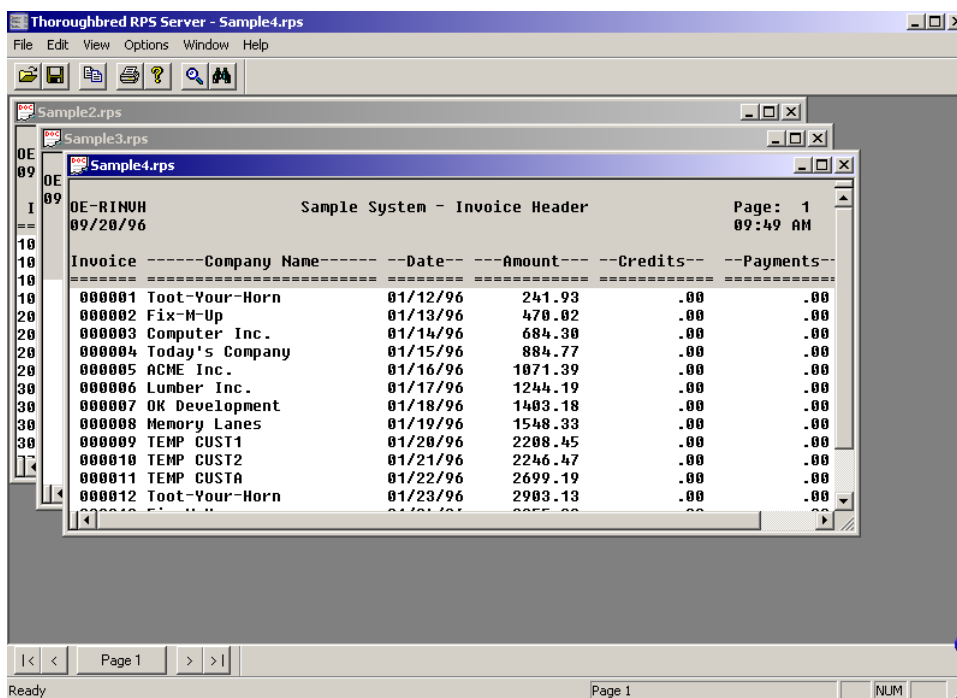
TS ReportServer is included as a standard output device in the Dictionary-IV printer selection prompt:

```
Select Printer ( LP P& RS PF PN ) : RS
```

When TS ReportServer is selected as the output device, the report will automatically be displayed by the TS ReportServer on the client.



TS ReportServer can display multiple reports. Each report is displayed in a window contained by one common TS ReportServer GUI Server window.



Any report displayed by TS ReportServer can be saved locally on the client. By default, the file is saved in TS ReportServer format (with the .rpt file extension). For more information on saving and opening local report files please see "Save a Report" later in this manual.

An application performing CONNECT REPORT can control the output device by pre-setting the printer id. This allows the application to send the report output to the TS ReportServer without user intervention.

If the TS ReportServer is available, Query-IV sends all terminal output to the TS ReportServer for processing. Your application can duplicate this process. Query-IV uses the following tests to determine if the TS ReportServer is available:

**Is the default output set to the terminal?**

```
FID(0)
```

**Does the Global variable RPSERV exist?**

```
CGV("RPSERV")
```

**Does the Workstation have GUI capabilities?**

```
#IDVIP.GUI-ON="Y"
```

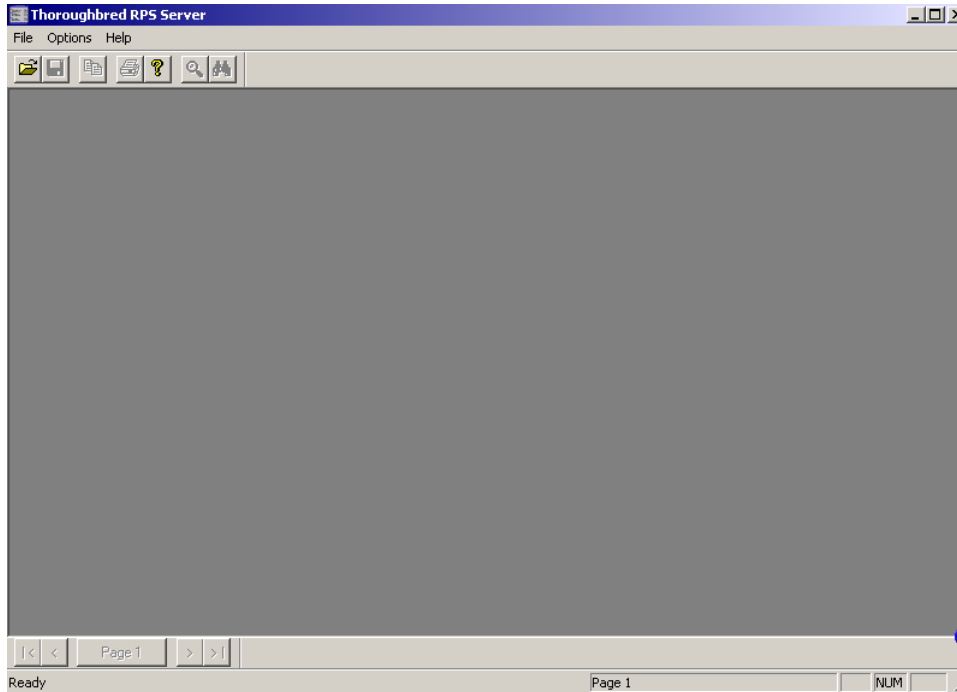
If these tests determine that the TS ReportServer is available set the output device to the Global variable **RPSERV**.

```
LET REPORT$[6]=cgv("RPSERV")
```

```
CONNECT Report "report-name"
```

# TS REPORTSERVER WINDOW

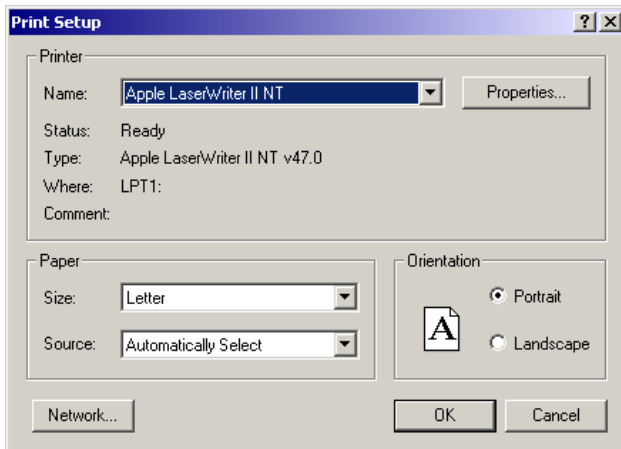
The main TS ReportServer GUI Server window is displayed when TS ReportServer is selected as the output device on the host or when you select the TS ReportServer icon on the client from the VIP program group.



## File

**Open an rps file**

**Print Setup** to select the printer properties, etc.



**Recent Files** to select from the last files opened.

**Exit** TS ReportServer.



## Options

Check (display) or uncheck (remove) the **Status Bar**, **Pagebar**, and **Toolbar** from the TS ReportServer window. See the graphic above to see where these are located.

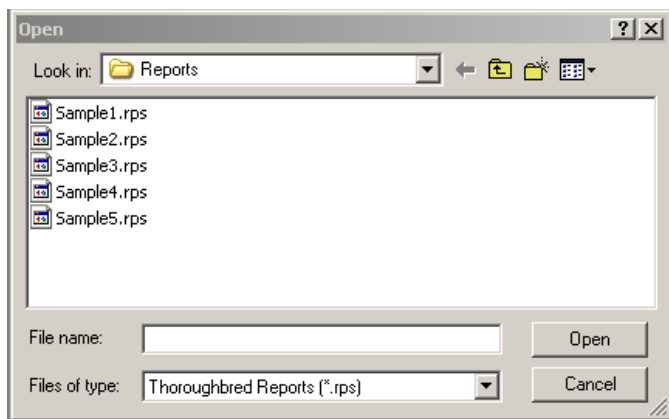
Check **Paged Scroll** to scroll the last 100 pages of the report history.

## Help

Access TS ReportServer help.

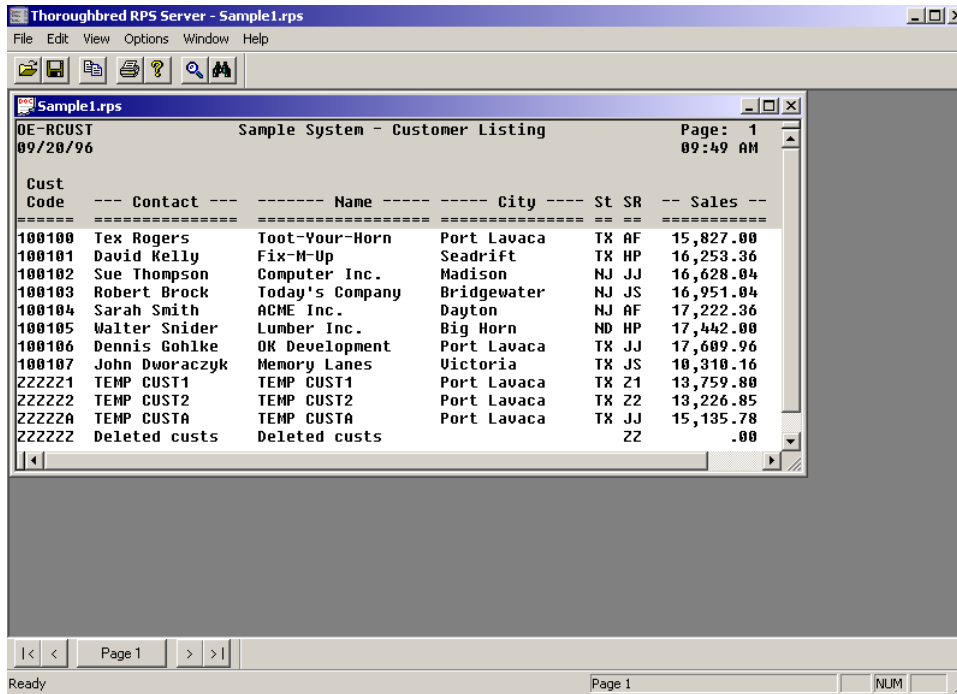
## Open a Report

From the TS ReportServer window select the **File** menu and then select **Open**.



**NOTE:** TS ReportServer can only open (display) files that have been saved in .rps format.

The .rps files above are sample reports that are stored in *vip-user-path\TSI\Reports*. Select **Sample1.rps** and the following report appears:



**NOTE:** The TS ReportServer can handle multiple reports as well as split screen viewing within a report. See below.

## Menus

### File

**Open** an .rps file located in *vip-user-path\TSI\Reports*.

**Close** the currently highlighted report.

**Save** the currently highlighted report.

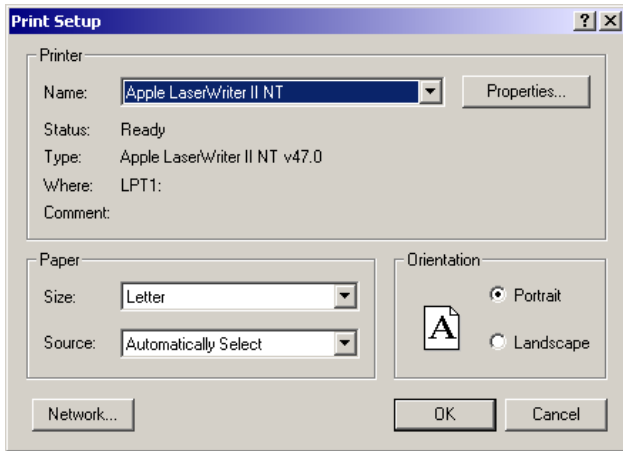
**Save As** an .rps or .txt file.

**Print** the currently highlighted report.

**Print Preview** of the report before printing.

### Print Setup

Displays the dialog box below so you can select the printer, paper size, orientation, etc.



**Recent Files** displayed are listed.

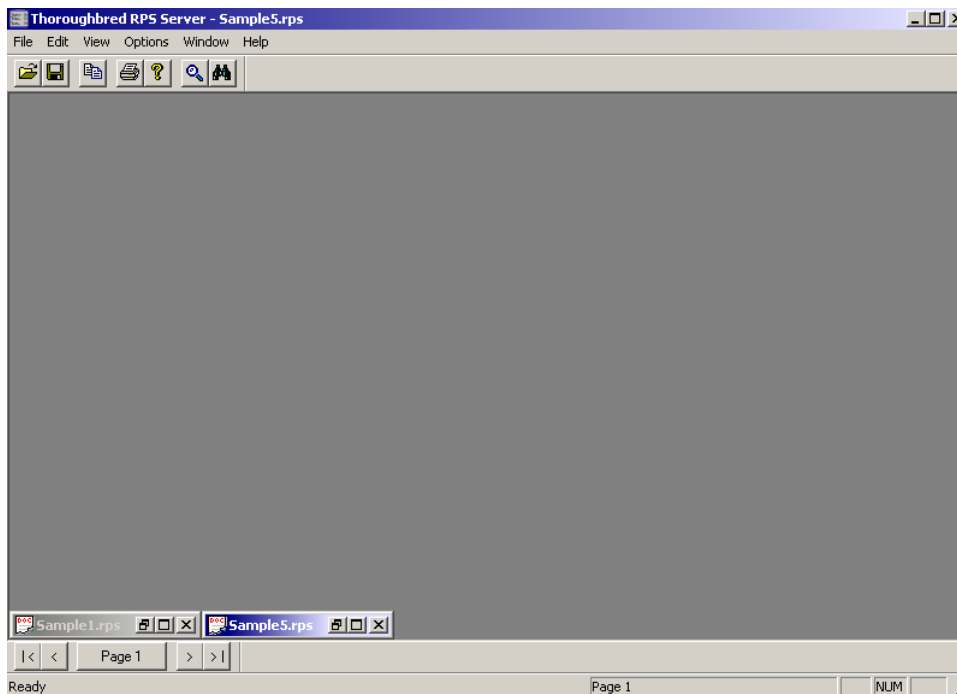
**Exit** TS ReportServer

**Edit** - Select Copy, Find or Select All

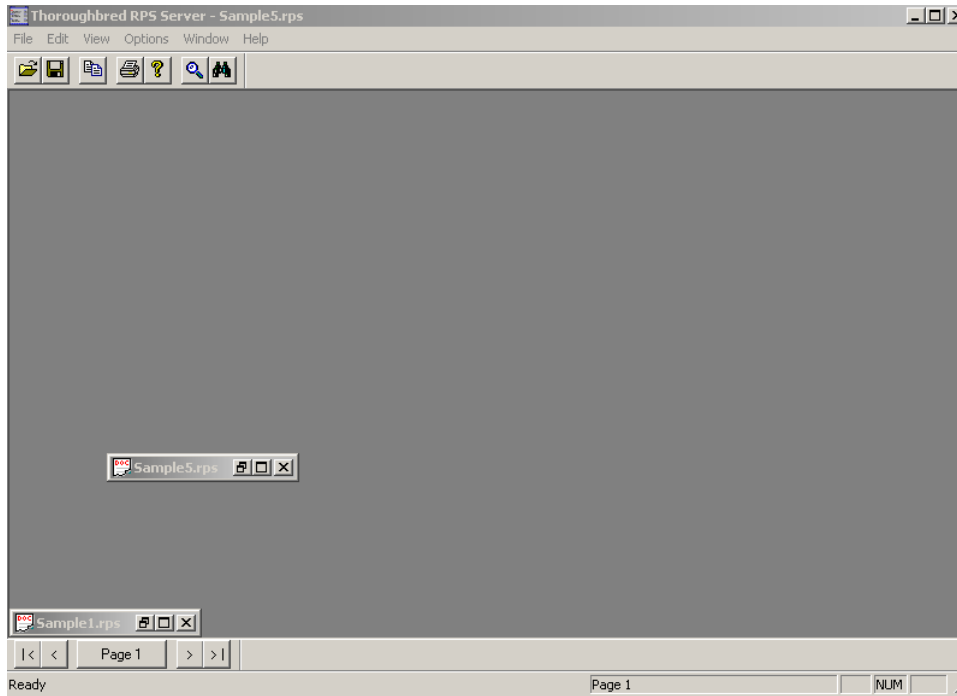
**View** – Select Zoom In, Zoom Out, or select the Font.

**Options** – Select to view any or all of the following: Toolbar, Pagebar, Status Bar or Paged Scroll.

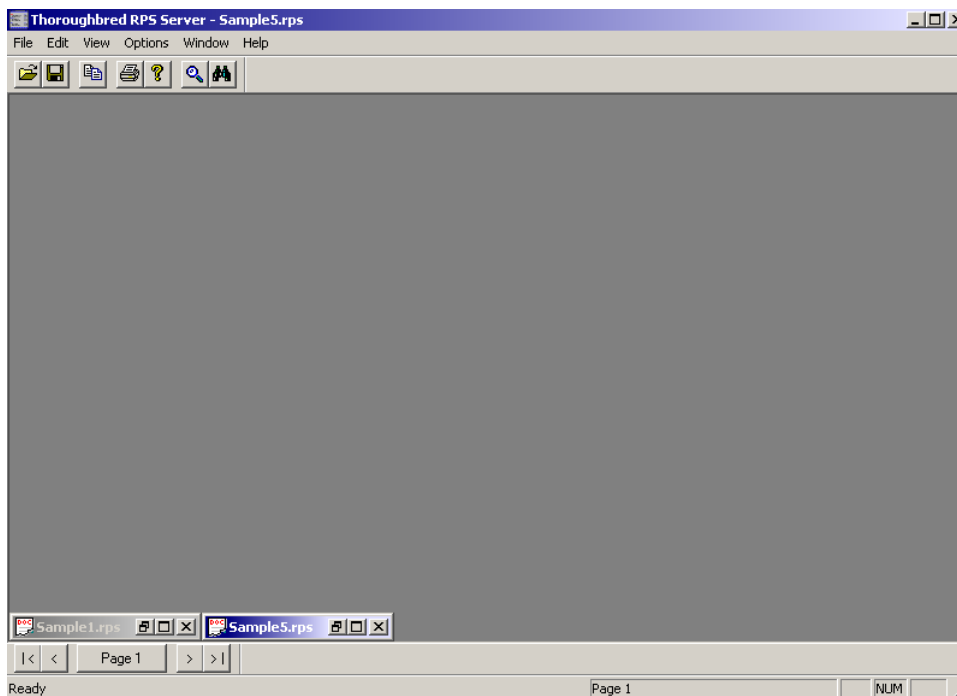
**Window** – Select to Cascade or Tile the windows. You can also Arrange Icons. This simply means that when you minimize a report window, an icon for the report displays at the bottom of the window (see below).



and you move one of the "icons" (see below).



Select **Windows** → **Arrange Icons** to place them back at the bottom of the screen (see below).



**Help** – Select the Help index or find the version number (About).

## ***Toolbar***

The Toolbar can be moved using normal Windows procedures. The following buttons are available from the Toolbar:



**Open** – This button allows you to open an .rps file to edit.

**Save** – This button allows you to save the file (the first time opened) or to save edits to the report.

**NOTE:** From the File menu you can save the report as \*.rps, or \*.txt files. From the Edit menu you can copy the report to the clipboard, make changes to the report and save, or exit without saving. For more information see Saving a Report.



**Copy** – This button allows you to copy the edited file to the clipboard.



**Print** – This button allows you to print the edited file.

**About** – This button displays the TS ReportServer version.

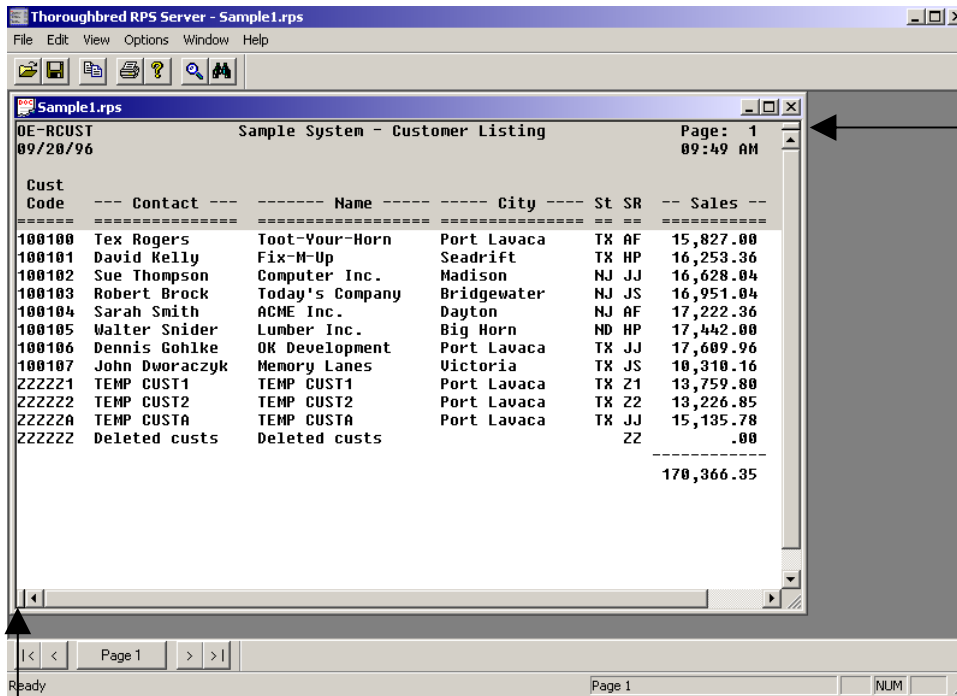


**Font Size** – This button allows you to zoom in or out in the report.

**Find** – This button allows you to search the file for characters, numbers or words.

## ***Split Screen Viewing***

With TS ReportServer you can split reports both vertically and horizontally. Each pane contains a set of scroll bars allowing each to be scrolled independently of the other. It supports a total of four panes: two vertical split panes and two horizontal split panes.

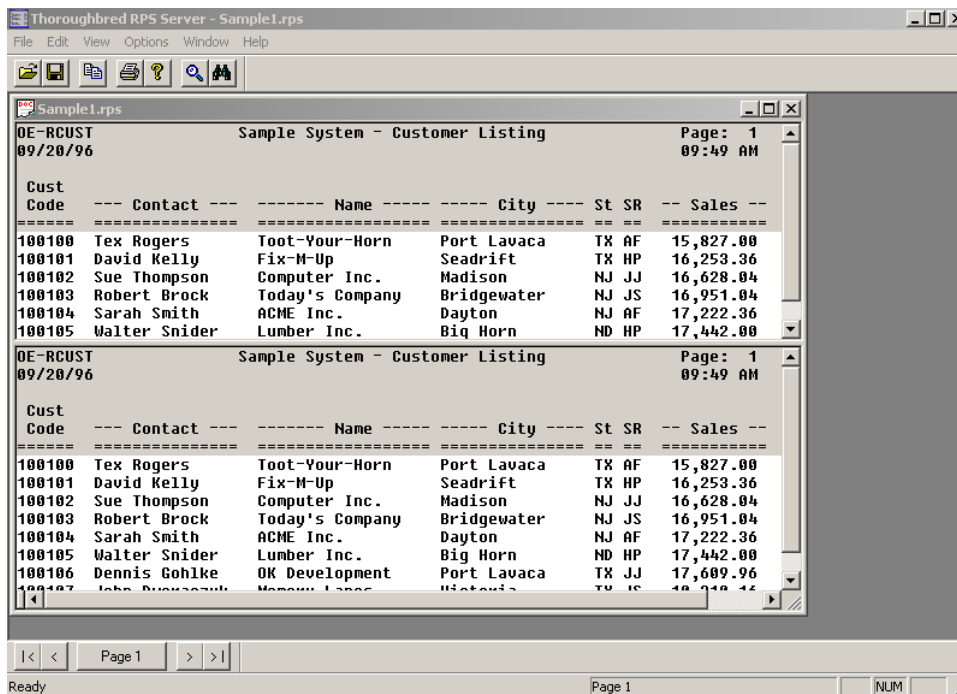


Grab for vertically split screen.

Grab for horizontally split screen.

### To create two vertical panes

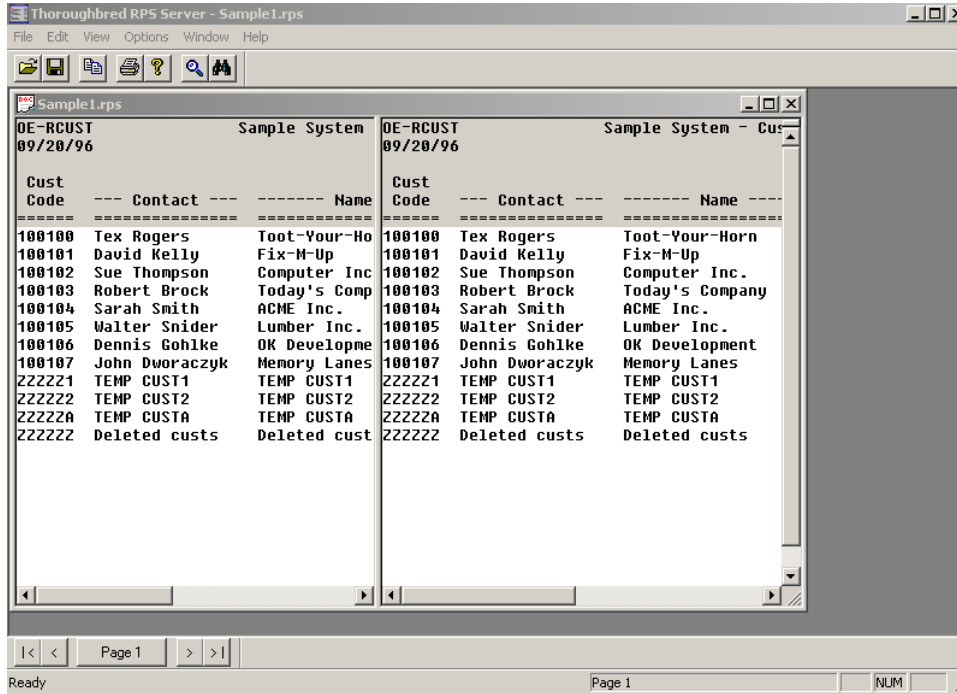
Grab the little button on top of the vertical scroll bar (see graphic above) and then drag your mouse down.



You now have two vertical panes that can be scrolled independently. To create a single pane, reverse the procedure used to create two panes.

**To create two horizontal panes**

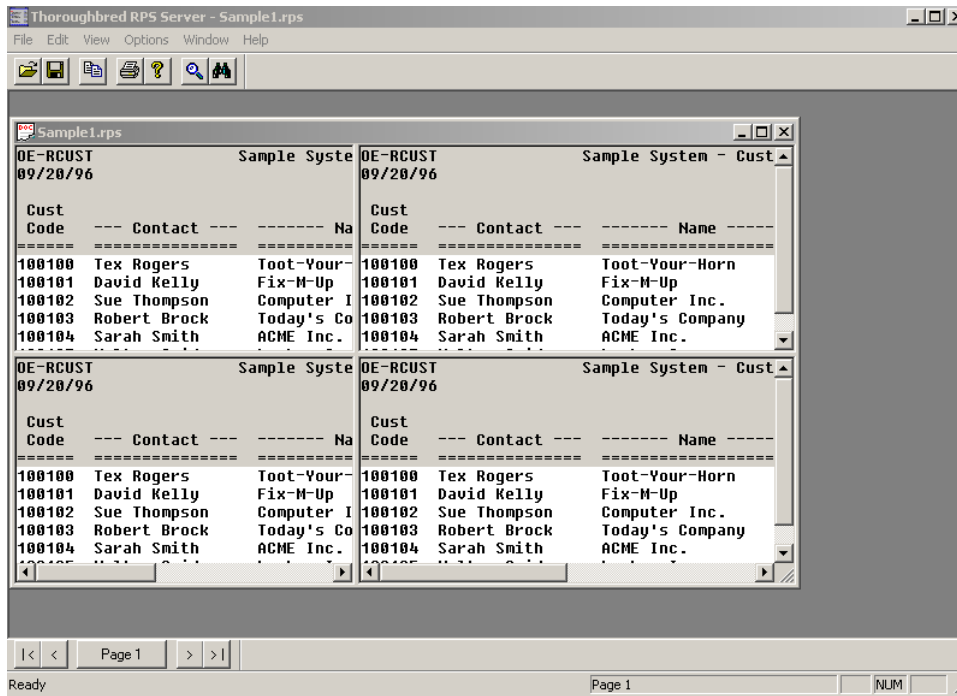
Grab the little button on the left of the horizontal scroll bar (see graphic at the beginning of this section) and then drag your mouse to the right.



You now have two horizontal panes that can be scrolled independently. To create a single pane, reverse the procedure used to create two panes.

## To create four panes

Simply perform the two procedures above and you will have a split screen similar to the one below:

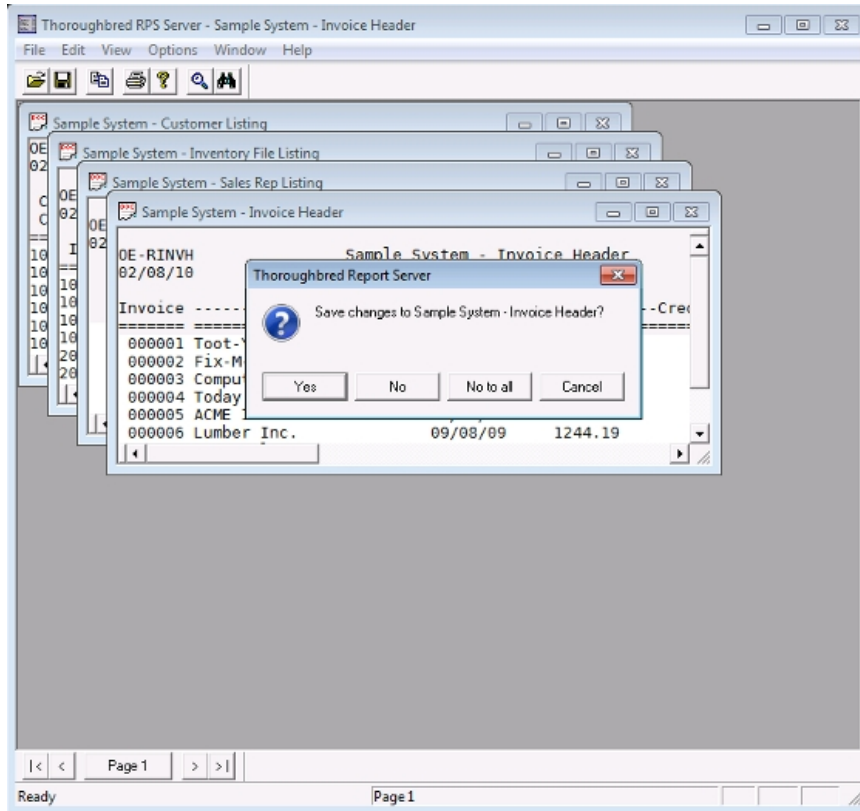


The frame can be resized using normal Windows procedure. Grab any side or corner and enlarge or decrease the size.



## Save a Report

A report can be saved by selecting **File** menu **Save**, by closing a report window or by closing the main TS ReportServer window. The following message is displayed for the top report displayed in the main TS ReportServer window:



**Yes** – Will save the report prompting for a file name, location and a file extension.

**No** – Will close the report without saving it.

**No to all** – Will close the current report without saving and will not prompt you to save when closing other report windows. This eliminates the need to respond No for each opened report.

**Cancel** – Closes the save dialog and without doing anything.

TS ReportServer allows you to save a report in two formats.

### ***Saving as a Thoroughbred Reports file (\*.rps)***

- From the **File** menu select **Save**. The report file will be saved to the default folder. The default folder location is set from the WorkStation Manager Default Directories tab. If none is supplied report files will be saved in *vip-user-path*. For more information please see the WorkStation Manager Manual.

- From the **File** menu select **Save As** and then you can save the report as a TS ReportServer file (.rps) in the folder of your choice.

### ***Saving in a different format***

From the **File** menu select **Save As** and then you can save the report as a text file (txt) in the folder of your choice.

<p><b>NOTE:</b> TS ReportServer can only display reports that are saved in .rps format. Once a report is saved as a text file, TS ReportServer cannot be used to open it.</p>
---

### ***Copying to the Clipboard***

From the Edit menu select Copy and then you can Paste the report in any DDE compliant application.

# GATEWAY FOR WINDOWS

The host program requires a simple communication. Each page uses a single CALL to the program RPSCOM.

Terminate each line on the page with:

```
CRLF (CHR(13)+CHR(10))
```

Terminate each page with:

```
FF (CHR(12))  
page-of-data" + CHR(12)
```

Prefix the CRLF at the end of each line with a CHR(11) to indicate a heading line.

```
CHR(11) + CRLF
```

The TS ReportServer displays a dialog status box as each page is received and processed. Append the following instruction to the final page of the report:

```
"page-of-data-for-last-page" + "[.END.]"
```

The TS ReportServer immediately displays the report. It allows complete user manipulation and processing of the report, including forward and backward scrolling, printing to a file, and saving to a file.

## Example

The following example illustrates the simplicity of the host programming required to invoke TS ReportServer.

```
00010 REM &REM&  
  
00020 BEGIN;  
      DIM M$[5];  
      !Gateway call string  
      LINEEND$=CHR(13)+CHR(10),           !End of  
line indicator  
      HEADLINEEND$=CHR(11)+LINEEND$,     !End of heading  
indicator  
      LAST$="[.END.]"                   !Last  
page indicator
```

```

00100 M$[1]="I4",
M$[2]="RPS",
M$[3]="SYSTEM",
M$[5]="[.LOAD.]";
CALL "RPSCOM",M$[ALL];
IF M$[0]<>". "
    GOTO 9000
ELSE
    M$[1]="P",
    M$[5]="**"+
        "UTSAMPLE"+
        !Define Report Message:
        !(1,2)="**"
        !(3,8)=Report name

        !(11,40)=Report Description
        "Gateway for Windows Test Report "+
        "080"+
        width
        "060";
        lines/page
        CALL "RPSCOM",M$[ALL]
        !(51,3)=Report
        !(54,3)=Number of

00200 REM PAGE1

00210 P$="",
    P$=P$+" HEADING LINE 1 "+HEADLINEEND$,
    P$=P$+" HEADING LINE 2 "+HEADLINEEND$,
    P$=P$+"DETAIL LINE 1 "+LINEEND$,
    P$=P$+"DETAIL LINE 2 "+LINEEND$,
    P$=P$+"DETAIL LINE N "+LINEEND$,
    P$=P$+CHR(12);
    GOSUB 1000

00220 REM PAGE2 THRU PAGEn

00230 P$="",
    P$=P$+" HEADING LINE 1 "+HEADLINEEND$,
    P$=P$+" HEADING LINE 2 "+HEADLINEEND$,
    P$=P$+"DETAIL LINE 1 "+LINEEND$,
    P$=P$+"DETAIL LINE 2 "+LINEEND$,
    P$=P$+"DETAIL LINE N "+LINEEND$,
    P$=P$+CHR(12);
    GOSUB 1000

00240 REM LAST PAGE

00250 P$="",
    P$=P$+" HEADING LINE 1 "+HEADLINEEND$,
    P$=P$+" HEADING LINE 2 "+HEADLINEEND$,
    P$=P$+"DETAIL LINE 1 "+LINEEND$,
    P$=P$+"DETAIL LINE 2 "+LINEEND$,
    P$=P$+"DETAIL LINE N "+LINEEND$,
    P$=P$+LAST$;
    GOSUB 1000;
    GOTO 9000

```

```
01000 M$[5]=P$;  
      CALL "RPSCOM",M$[ALL];  
      RETURN
```

```
09000 RUN "***"
```

## **MULTI-LANGUAGE**

For more information about Multi-Language, see the Dialog, Message, and MenuBar Text Translations section in the Multi-Language for VIP.