

TS ODBC DataServer™

Installation and Activation Guide



Version 8.6.0

285 Davidson Ave. • Ste. 302 • Somerset, NJ 08873-4153
Telephone: 732-560-1377 • Outside NJ 800-524-0430
Fax: 732-560-1594

Internet address: **<http://www.tbred.com>**

Published by:
Thoroughbred Software International, Inc.
285 Davidson Ave., Suite 302
Somerset, New Jersey 08873-4153

Copyright © 2007 by Thoroughbred Software International, Inc.

All rights reserved. No part of the contents of this document
may be reproduced or transmitted in any form or by any means
without the written permission of the publisher.

Document Number: DDB8.6.0I01

The Thoroughbred logo, Swash logo, and Solution-IV Accounting logo, THOROUGHbred, IDOL, OPEN WORKSHOP, and VIP VISUAL IMAGE PRESENTATION are registered trademarks of Thoroughbred Software International, Inc.

Thoroughbred Basic, Thoroughbred Environment, OPENworkshop, T-WEB, IDOL-IV, Inquire-IV, Dictionary-IV, Script-IV, Report-IV, Query-IV, Source-IV, TS Network DataServer, TS ODBC DataServer, TS ODBC R/W DataServer, TS ORACLE DataServer, TS DataServer for MS SQL Server, TS XML DataServer, VIP (Visual Image Presentation), VIP for Dictionary-IV, VIP, GWW, Gateway for Windows™, TS ChartServer, TS ReportServer, TS WebServer, TbredComm, WorkStation Manager, Solution-IV, Solution-IV Reprographics, Solution-IV ezRepro, TS/Xpress, and DataSafeGuard are trademarks of Thoroughbred Software International, Inc.

MS-DOS, Xenix, Windows, Microsoft Windows 2000, NT, and XP, Windows 2003 Server and MS SQL Server are trademarks of Microsoft Corp. IBM, IBM PC, OS/2, PS/2, and PC-DOS are trademarks of International Business Machines Corp.

DEC, OPEN VMS, and ULTRIX are trademarks of Digital Equipment Corp.

UNIX is a trademark licensed exclusively through X/Open Company

LTD.Novell is a registered trademark of Novell, Inc.

Oracle is a registered trademark of Oracle Systems Corporation

InstallShield is a registered trademark of Stirling Technologies, Inc.

Other names, products and services mentioned are the trademarks or registered trademarks of their respective vendors or organizations.

INTRODUCTION

The TS ODBC DataServer provides access to Thoroughbred data from third party applications. The DataServer is shipped in 2 models: Single-Tier and Multiple-Tier. This manual will detail how to install Single-Tier and Multiple-Tier client components, the Multiple-Tier server component, and the TS ODBC DataServer Expose Utility. In addition, the method for activating the server component of the Multiple-Tier system is detailed.

Note: To install the TS ODBC Gateway for Windows 2000/NT/XP, refer to the Multiple-Tier instructions. In this environment, the client software will be loaded on the Windows 2000/NT/XP Server system. The server software will be loaded on either a Windows 2000/NT/XP or UNIX server.

- In the Single-Tier model of TS ODBC DataServer, the Client and Server elements of the system and the Expose utility all reside on the same platform.
- In the Multiple-Tier model of TS ODBC DataServer, the ODBC driver resides on the client platform, which is connected via a LAN to the server platform, where the server component and the Expose Utility reside.

During the installation of the client software, both the Single-Tier and Multiple-Tier ODBC drivers will be installed. Activation is only required for the server component of the Multiple-Tier installations.

Client Platforms Supported

The Single-Tier and Multiple-Tier Client software are 32-bit and support Microsoft Windows 2000/Windows NT 4.0 or later/XP, UNIX and Linux.

Server Platforms Supported

The server component software of TS ODBC DataServer is available on various UNIX platforms, Linux, and Windows 2000/NT/XP. Please call your Thoroughbred Sales Representative for a list of available servers.

Installation Guidelines

Single-Tier

Please refer to *How to install the TS ODBC DataServer Client* and *How to Install TS ODBC DataServer Expose Utility*.

Multiple-Tier

First install the Server software (see *How to Install the Multiple-Tier Server*). This must be done before installing the Client on each workstation (see *How to Install the TS ODBC DataServer Client*).

Refer to Chapter 4, *Activation*, for details on activating the server. Lastly, to install the Expose Utility refer to *How to Install TS ODBC DataServer Expose Utility*.

INSTALLING/UPGRADING THE MULTIPLE-TIER SERVER

UNIX/Linux Server

Note: If you are installing or upgrading the server and loading into the same directory as a previous version, you must stop any currently executing `tfodbcd` process. Otherwise, the install/upgrade will not be successful.

To install the TS ODBC DataServer Server software, perform the following steps:

1. Create the base directory for the Server software. For example, you may wish to install the software in the directory `/usr/local/tsodbc`. Log in as root, then perform the following:

```
cd /usr/local
mkdir tsodbc           : make the tsodbc directory (if necessary)
cd tsodbc
```

2. Mount the CD using the appropriate command for your system. Copy the distribution media to the system using `cpio`. This example is for SCO OpenServer. Substitute the appropriate directory path value for your environment.

```
umask 0
cpio -icvBmud </mountpoint/scoos5/tsod_srv/tsod
(for Linux use -ivBmud above.)
```

where *mountpoint* refers to the directory where the CD-ROM is mounted

3. If this is an upgrade and there is a TS ODBC DataServer server component loaded, you must first remove the file **tbredodbc.nn** from the `/usr/lib/basic` directory if at least one of the following conditions is true:
 - You are increasing the maximum number of connections in the same version of the TS ODBC DataServer.
 - You are changing the current TS ODBC DataServer serial number.
4. Run the script **install** in your Server software base directory (for example, `usr/local/tsodbc`).

```
cd /usr/local/tsodbc
./install -n
```

After you enter **./install -n**, the system will display the Installation Setup screen:

```
*****
*
*
*          TS ODBC DataServer Installation Setup
*
*
*****

Enter the software serial number (provided on media label):
(          -          )
```

Enter the software serial number (provided on media label):

Type the serial number from the media label and press the **Enter** key. If you type an invalid value, the system will generate the message:

INVALID SSN. RETRY? (Y/N):

- Y** You can enter a valid value. If the **install** utility does not accept the software serial number printed on the label, please contact your Thoroughbred dealer.
- N** The **install** utility will return to the operating system prompt. It will not install or upgrade the TS ODBC DataServer.

After the **install** utility validates the serial number, it will display the following message:

Installing TS ODBC DataServer, Please Wait...

Then, after some time elapses, the **install** utility displays the following message:

TS ODBC DataServer Installation part 1 completed successfully.

The **install** utility will return to the operating system prompt.

The installation of the server component is now complete. To start the server, execute the following.

```
cd /usr/local/tsodbc          : move to install directory
./tfodbcd
```

Proceed to *How to Install the TS ODBC DataServer Client* to load the Multiple-Tier Client.

Windows 2000/NT/XP Server

Note: If you are installing or upgrading the server and loading into the same directory as a previous version, you must stop any currently executing TS ODBC DataServer Manager service. Otherwise, the install/upgrade will not be successful.

Contents of the Server Software

The server software contains the following utilities:

- **Server Activation.** This is the process to activate the server. Refer to the Activating section.
- **Process Viewer -** This utility will produce a list of the processes associated with the server.

System Requirements

Before you install the server software, check that you have the following:

- A computer system with a 486 processor or better.
- A hard disk, with a minimum of 10 Mb of disk space free (if all components are installed).
- A CD-ROM drive.
- A working network connection.. The client and server must be able to access each other by both name and TCP/IP address. To verify this, use the “ping” command.
- Enabled *Thoroughbred Environment*.

Installing the Server Software

Prior to installing the software, take note of the following:

- Before installation begins, ensure that there are no memory resident tasks that could affect installation. This includes the Microsoft Office Toolbar and Windows Explorer. Both programs will lock DLL's that may be updated during the installation process.
- Insure you are logged on as the 'Administrator'.

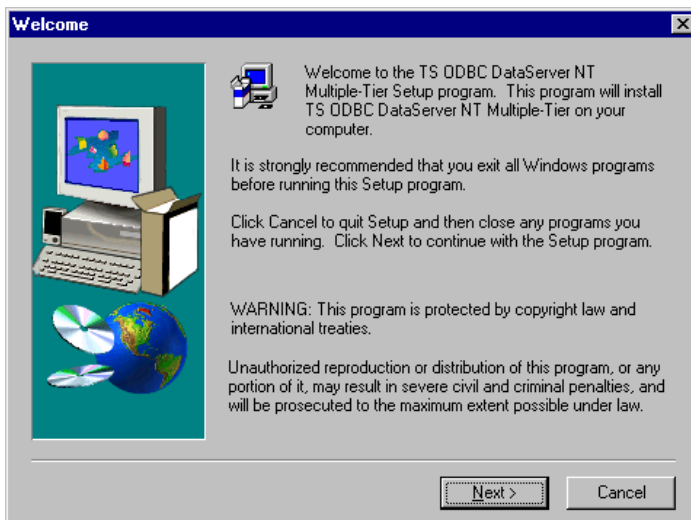
Should you have problems after installation, (for example Thoroughbred ODBC Query from the client system will not connect to a data source), verify the network connection as specified in System Requirements.

CD-ROM Installation

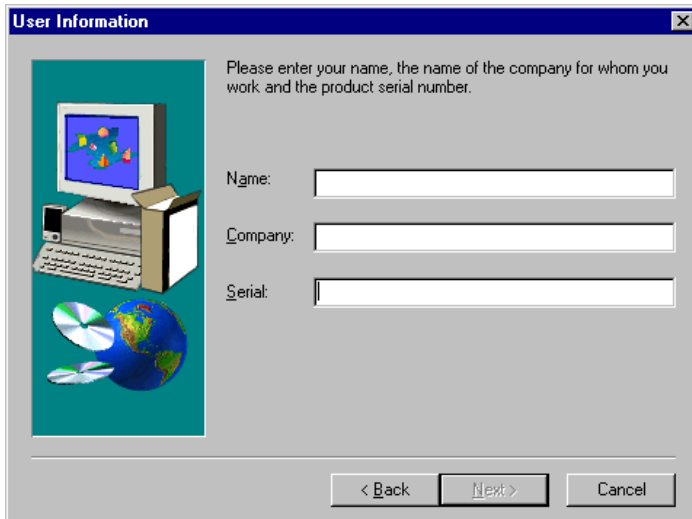
CD-ROMs are configured with AutoPlay capabilities. Insert the CD-ROM in the drive and AutoPlay will take you through the installation.

If AutoPlay is not active, then from the Windows Start button, select **Run**. Type **D:\launch** where D: represents the CD-ROM drive. You may need to replace this value with the drive letter appropriate for your system.

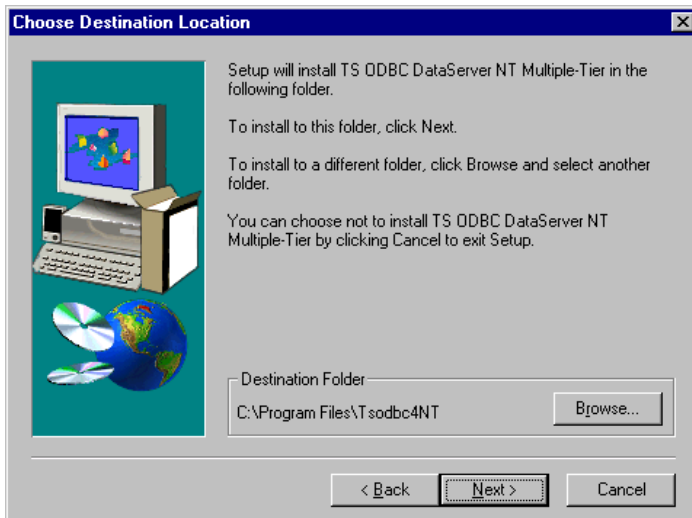
1. Select **Install**. Choose **TS ODBC DataServer NT Multiple-Tier**.
2. The InstallShield Wizard will guide you through the installation process. The Welcome dialog box displays.



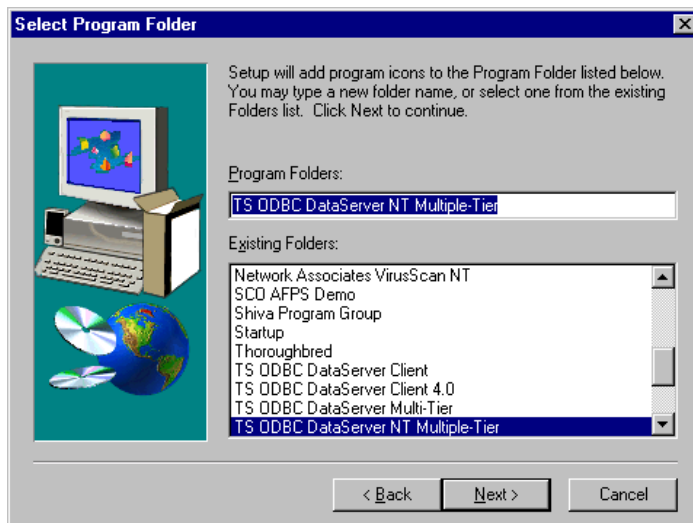
3. The system will display a dialog where information about the system and product serial number is entered. Locate the distribution CD-ROM. Enter the serial number from the label.



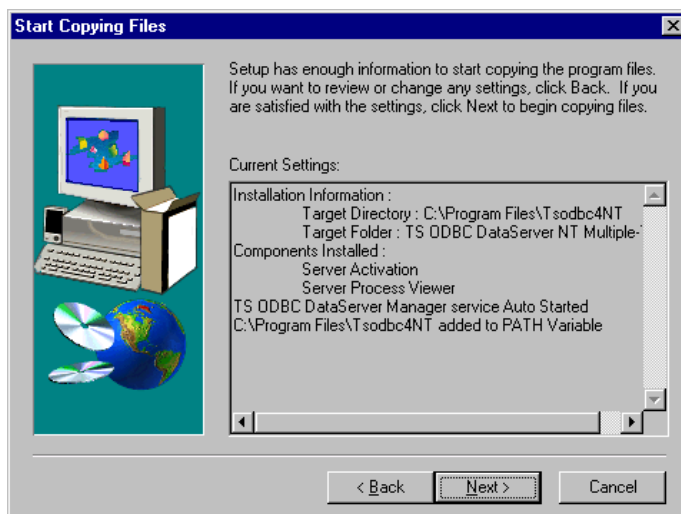
4. Click the **Next** button to continue with the **Choose Destination Location** form.



5. Next select your **Program Folder**. The default is TS ODBC DataServer NT Multiple-Tier.



6. At this point **setup** displays what it intends to install, based on the selections you have made. If you wish to make any changes before proceeding with the installation, click the **Back** button.



If this screen reflects the correct parameters for the client installation, click the **Next** button.

The system will install the server software and install and start the TS ODBC DataServer service.

Upgrading the Server

Follow the installation process outlined in the previous section to upgrade the software version. If upgrading the number of connections be sure to enter the new serial number in the User Information screen.

INSTALL THE TS ODBC DATASERVER CLIENT (WINDOWS)

Contents of the Client Software

The Client software contains the following components:

- **Thoroughbred ODBC Administrator.** This is always installed and is used to configure data sources once the Expose Utility has been run.
- **Thoroughbred ODBC Query** - This utility is used to test the data source.
- **ODBC Driver and System files.** Both the Single-Tier and the Multiple-Tier Clients include a 32-bit driver. Both drivers are loaded during the client software installation.

System Requirements

You must have the following:

- An IBM or 100% compatible PC, with 486 processor or better.
- A hard disk, with a minimum of 10 Mb of disk space free (if all components are installed).
- A CD-ROM drive.
- The TS ODBC Data Server requires name resolution to allow forward and reverse resolution of server and client names. The details of implementation are beyond the scope of this manual. Please contact your Network Administrators or Thoroughbred Consulting Services for assistance in this area.
- For Multiple-Tier versions of TS ODBC DataServer:
 1. TCP/IP software on the client system must be **WINSOCK-compliant**. The 32-bit driver is **WSOCK32.DLL** and should reside in the \WINNT\SYSTEM32 directory for Windows NT. **Note:** TCP/IP must be fully installed. Just copying the WINSOCK DLL will not be sufficient.
 2. A working network connection to a host with TCP/IP. The client and host must be able to access each other by both name and TCP/IP address. To verify this, use the “ping” command.

Installing the Client Software

Prior to installing the software, take note of the following:

- Re-start Windows (all versions) before installing to be sure that there are no memory resident tasks that could affect installation. This includes the Microsoft Office Toolbar and Windows Explorer. Both programs will lock DLL's that may be updated during the installation process.
- When installing on Windows 2000/NT/XP insure you are logged on as the 'Administrator'.

Should you have problems after installation, (for example Thoroughbred ODBC Query will not connect to a data source), verify the network connection as specified in System Requirements, item number 2 above.

Note: CD-ROMs are configured with AutoPlay capabilities. Insert the CD-ROM in the drive and AutoPlay will take you through the installation.

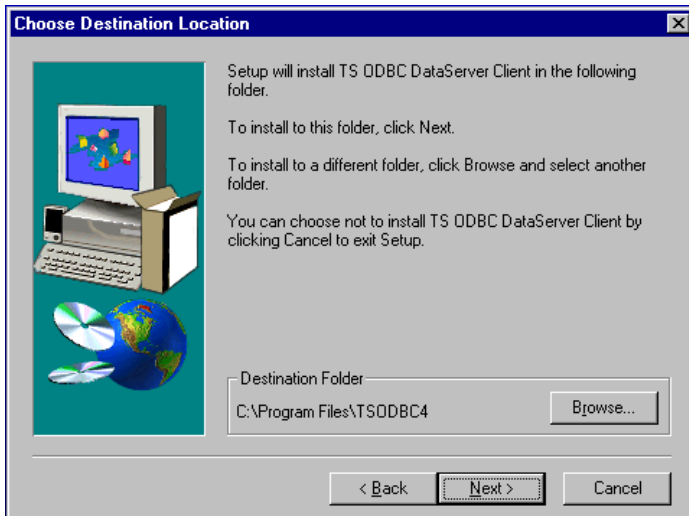
If AutoPlay is not active, then from the Windows Start button, select **Run**. Type **D:\launch** where D: represents the CD-ROM drive. You may need to replace this value with the drive letter appropriate for your system.

Begin the Installation Procedure

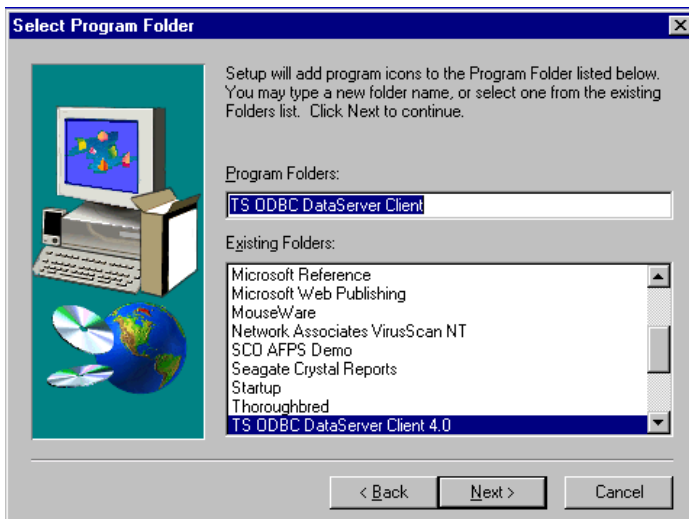
1. Select **Install**. Choose **TS ODBC DataServer Client Software**.
2. The InstallShield Wizard will guide you through the installation process. The Welcome dialog box displays:



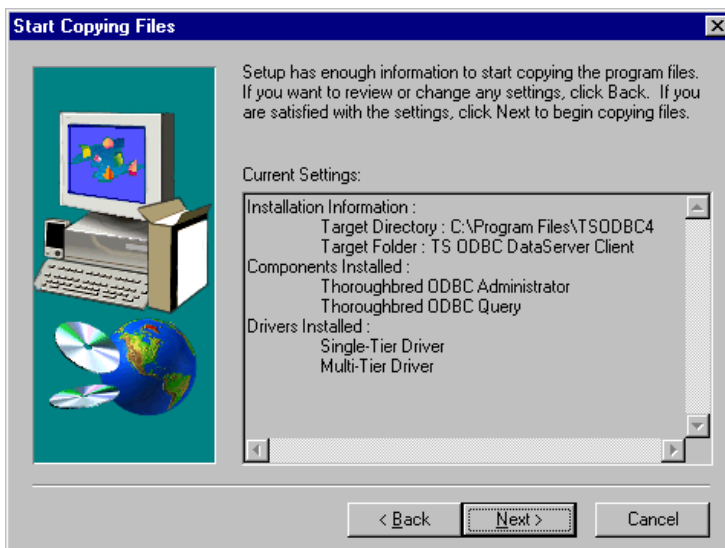
3. Click the **Next** button to continue with the **Choose Destination Location** form.



- Next select your **Program Folder**. The default is TS ODBC DataServer Client.



- At this point **setup** displays what it intends to install, based on the selections you have made. If you wish to make any changes before proceeding with the installation, click the **Back** button.



- If this screen reflects the correct parameters for the client installation, click the **Next** button. The system will install the client software.
- To complete the installation you will need to do the following:

Establish a connection
Set the SERVER.MAP file
Set the IPLINPUT DEV and CNF statements

For information about setting up your Thoroughbred System files, please see the Basic Customization and Tuning Guide available on your product CD or online at www.tbred.com.

INSTALL THE TS ODBC DATASERVER CLIENT (UNIX/LINUX)

The TS ODBC DataServer provides access to Thoroughbred data from ODBC-enabled applications. This document will detail the components and installation steps for the TS ODBC DataServer client for UNIX/Linux.

Contents of the Client Software

The following driver files are included in the product:

- libtfodbcst.so - Single-Tier Driver Library
- libtfodbcS.so - Single-Tier Setup Library
- libtfodbccl.so - Multi-Tier Driver Library

libtfodbcS.so - Multi-Tier Setup Library

System Requirements

Client Platforms Supported

- Linux kernel 2.4.20 and later -- verify with `uname -a`
- unixODBC 2.2.8 and later -- verify with `odbcinst -j`

Server Platforms Supported

The server component software of TS ODBC DataServer is available on various UNIX/Linux platforms and Windows 2000/NT. Please call your Thoroughbred Sales Representative for a list of available servers.

Installing the Client Software

1. Load the Drivers

The driver files may be installed in any directory. The following examples assume they are installed in `/usr/local/lib`.

Mount the CD-ROM (Red Hat Linux) and install the driver files.

```
mount /dev/device-name mountpoint
cd /usr/local/lib
cpio -ivBud < mountpoint/linuxclient/tslnx
```

2. Build Entries in `odbcinst.ini`

Add a section to **`odbcinst.ini`** for each driver you want use. Locate the `odbcinst.ini` on your system by executing the `odbcinst` command (which is supplied as part of the `unixODBC` package) as follows:

```
odbcinst -j
```

The system will return information similar to the following:

```
unixODBC 2.2.10
DRIVERS.....: /etc/odbcinst.ini
SYSTEM DATA SOURCES: /etc/odbc.ini
USER DATA SOURCES...: /root/.odbc.ini
```

The **`odbcinst.ini`** file will be stored in the directory referenced by the 'DRIVERS' line.

The logical name for a driver is enclosed in brackets at the beginning of a section. This name will be used when defining Data Sources. Insert the following information into the `odbcinst.ini` file to add the Thoroughbred ODBC drivers to the system:

```
[TSODBCST]
Description = TS ODBC DataServer for unixODBC (Single-Tier)
Driver = /usr/local/lib/libtfodbcst.so
Setup = /usr/local/lib/libtfodbcSS.so
FileUsage = 1

[TSODBCCL]
Description = TS ODBC DataServer for unixODBC (Multi-Tier)
Driver = /usr/local/lib/libtfodbccl.so
Setup = /usr/local/lib/libtfodbccS.so
FileUsage = 1
```

3. Define Data Sources

You can define Data Sources manually by editing **`odbc.ini`**. Refer to the 'SYSTEM DATA SOURCES' line of the `odbcinst` command output for the **`odbc.ini`** file location on your system. The following is a sample Multi-Tier definition:

```
[SERVER]
Description = ODBC Test DataSource
Driver = TSODBCCL
HOST = your.server.com
UID = abc
```

In this example, `SERVER` is the name of the definition. It **must match** a name you created using the ODBC Expose Utility. This name is **case sensitive**.

The **Description** is a required keyword and should describe the Data Source.

The **Driver** keyword is also **required** and must match a driver that you have defined in `odbcinst.ini`.

The **HOST** keyword is **required** for **Multi-Tier** connections.

The following are **optional** keywords recognized by the TS ODBC drivers.

- UID** A Dictionary-IV operator code may be stored for login.
- PWD** The password associated with the listed UID.
- HOST** A URL used to connect to a remote TS ODBC DataServer.
- PORT** The port number to use for remote connections.

Security

The drivers are not capable of presenting dialogs for such things as logins and passwords. If a Dictionary-IV operator code and password is required it must be provided in the **odbc.ini** file or by the ODBC client you are using. LINK passwords and Record Access passwords are not allowed in this version.

Additional Resources

Refer to the TS ODBC Reference Manual for details about the ODBC Expose Utility.

The ODBCConfig program, if available, is an X-Windows client useful for maintaining Data Source configurations. The setup library must have been installed for the program to work. The program's sole purpose is to display and edit the **odbc.ini** and **odbcinst.ini** files. It cannot handle the password and translation features of the TS ODBC drivers.

You can find more information about unixODBC at www.unixODBC.org.

HOW TO INSTALL TS ODBC DATA SERVER EXPOSE UTILITY

Before you install the TS ODBC DataServer Expose Utility component, make sure you have:

- Installed the TS ODBC DataServer Single-Tier or Multiple-Tier software
- Installed the Thoroughbred Environment, version 8.3.1 or above
- Defined a device line in the appropriate IPL file for a hierarchical directory
- Defined data file formats and links in Dictionary-IV
- Defined the terminal device to use Thoroughbred Windows

To install the Single-Tier version of TS ODBC DataServer Expose Utility, please refer to the section titled *Single-Tier*. To install the Multiple-Tier version, please refer to the section titled *Multiple-Tier*.

Single-Tier/Windows 2000/NT/XP Server

Use the following procedure to install the Single-Tier and Windows 2000/NT/XP Server versions of TS ODBC DataServer Expose Utility:

CD-ROM Installation

CD-ROMs are configured with AutoPlay capabilities. Insert the CD-ROM in the drive and AutoPlay will take you through the installation.

If AutoPlay is not active from the Windows Start button, select **Run**. Type **D:LAUNCH** where D: represents the CD-ROM drive. You may need to substitute the drive letter with the value appropriate for your system.

1. Select **Install**. Choose **TS ODBC DataServer Expose Utility**.
2. At this point, please follow the instructions displayed. The installation will follow standard InstallShield processing. When asked for a **Destination Folder**, enter a directory (for example, C:\TBSC\IDL4) in the Basic environment that contains the data to be exposed to the ODBC applications.
3. Following the completion of the InstallShield process, start Thoroughbred Basic, type **RUN "INSTALL"**, and press the **Enter** key.
4. Follow the on-screen instructions to install the Single-Tier and Windows 2000/NT/XP Server versions of TS ODBC DataServer Expose Utility. For more information on installation conventions, please refer to appropriate Thoroughbred installation documentation (Thoroughbred Environment for Windows Supplemental Guide with Installation).

Multiple-Tier/UNIX Server

Use the following procedure to install the Multiple-Tier version of TS ODBC DataServer:

1. Logon to the server system.
2. Determine the location of the data dictionary (IDDBD) that contains the definitions of the data you plan to expose to ODBC (for example, /usr/lib/basic/IDL4).
3. Mount the CD using the appropriate command for this system. Copy the distribution media to the system using cpio. This example is for SCO OpenServer. Substitute the appropriate value for your environment.

```
umask 0
cpio -icvBmud </mountpoint/scoos5/tsi_env/tsodbc
(for Linux use -ivBmud above.)
```

4. Start Thoroughbred Basic, type **RUN "INSTALL"**, and press the **Enter** key.

Follow the on-screen instructions to install the Multiple-Tier version of TS ODBC DataServer Expose Utility. For more information on installation conventions, please refer to appropriate Thoroughbred Dictionary-IV installation documentation.

ACTIVATING

To complete the installation, the TS ODBC DataServer server component must be activated. The following procedure outlines the steps for a successful activation.

UNIX Server

1. Move to the directory where the server component was loaded. Execute the tfodbca program.

```
cd /usr/local/tsodbc
./tfodbca
```

2. The system will display a screen similar to the following:

```
*****
*
*
*          TS ODBC DataServer Activation Process
*
*
*****

This system contains a temporary installation of
TS ODBC DataServer.

You have less that '30' days before the number
of active users is restricted to 3.

      SSN = XXXXXXXXXX-XX

      Installation code = XXXXXXXXXX

Do you want to enter the Activation Key(Y/N):N
```

Until you enter a valid Activation Key, the system will operate as a temporary installation. Before you contact Thoroughbred Software International make sure you have the following information handy.

- Your Dealer Code
- The software serial number, which is found on the label on the distribution media or on the displayed Activation screen.
- The Installation Code, which is also displayed on the Activation screen.

To get an Activation Key you can:

- Call Thoroughbred Software International at (800) 524-0430 or (732) 560-1377 and follow the prompts to obtain an Activation Key.
- Send a fax to Thoroughbred Software International at (732) 560-1594.

Note: Please make sure that you include your fax number in the message so that Thoroughbred Software International can fax the Activation Key back to you.

- Visit our web page, www.tbred.com, and select the Activations option.

After Thoroughbred Software International provides the Activation Key, you must enter the value using the following procedure.

When the system prompts:

Do you want to enter the Activation Key?(Y/N):

Type **Y** and press the **Enter** key. The following message will be displayed:

Enter Activation Key:

Type the Activation Key you received from Thoroughbred Software International and press the **Enter** key. The following message will be displayed:

Performing final installation of TS ODBC DataServer...

After some time elapses the following message will be displayed:

TS ODBC DataServer Installation part 2 completed successfully.

Windows 2000/NT/XP Server

From the Start menu select the **TS ODBC DataServer NT Multiple-Tier** program group. Select **Server Activation**. The following screen will display:



The screenshot shows a dialog box titled "TS ODBC DataServer Security". Inside, it states: "This is a temporary installation of TS ODBC DataServer. You have less than 30 day(s) before the active session is restricted!". Below this, there are three input fields: "Serial Number:" with the value "104012345" and a dropdown menu showing "MY"; "Installation Code:" with the value "173571141"; and "Enter Activation Key:" which is empty. At the bottom, there are two buttons: "Authorize" and "Bypass".

Until you enter a valid Activation Key, the system will operate as a temporary installation. Before you contact Thoroughbred Software International make sure you have the following information handy.

- Your Dealer Code
- The software serial number, which is found on the label on the distribution media or on the displayed Activation screen
- The Installation Code, which is also displayed on the Activation screen

To get an Activation Key you can:

- Call Thoroughbred Software International at (800) 524-0430 or (732) 560-1377 and follow the prompts to obtain an Activation Key.
- Send a fax to Thoroughbred Software International at (732) 560-1594

Note: Please make sure that you include your fax number in the message so that Thoroughbred Software International can send the Activation Key to you.

- Visit our web page, www.tbred.com, and select the Activations option

After Thoroughbred Software International provides the Activation Key, you must enter the value using the following procedure.

Enter the Key in the **Enter Activation Key** field and click the **Authorize** button.

Following a successful activation, the system responds with this screen:



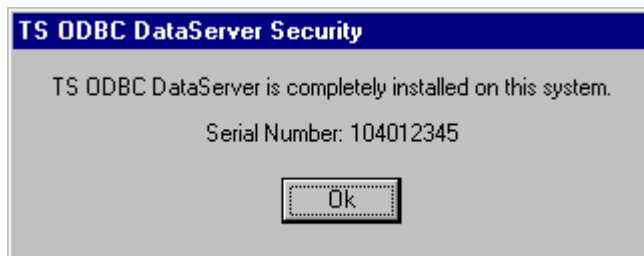
Click **OK**. The server is now activated.

If an invalid Activation key is entered, the following screen will display:



Click **OK**. The system will return to the main Activation window.

To verify that the server is activated, execute the Server Activation program. The following screen will display:



Click **OK** to close the window.